

RESIDENCES
18-20

KIDMAN ● PARK

precinct

TORRENS TITLE TERRACES



KIDMAN

ADELE AVENUE, KIDMAN PARK

With both ground floor and first floor living, the Kidman offers an abundance of flexible space designed for enjoyment.

The downstairs open plan kitchen and living configuration is perfect for entertaining family and friends, while upstairs the master bedroom features a walk-in robe with ensuite, and the well-appointed main bathroom which includes a bath. This home design is one of the most flexible options, as the rumpus room adds the potential for a third bedroom if needed after moving in.

rivergum
projects

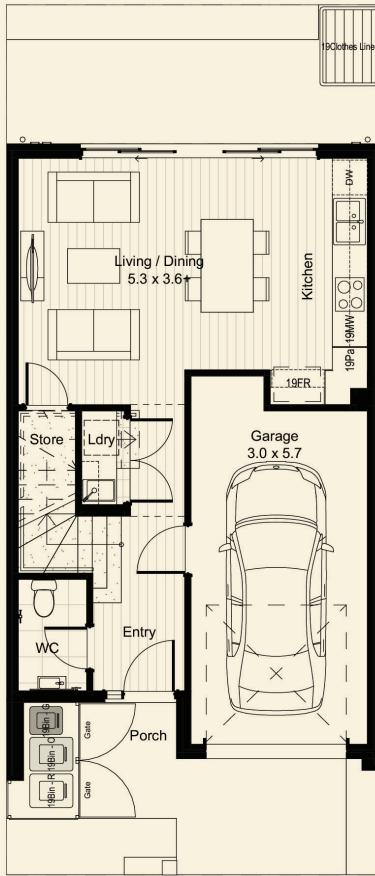
precinct

KIDMAN

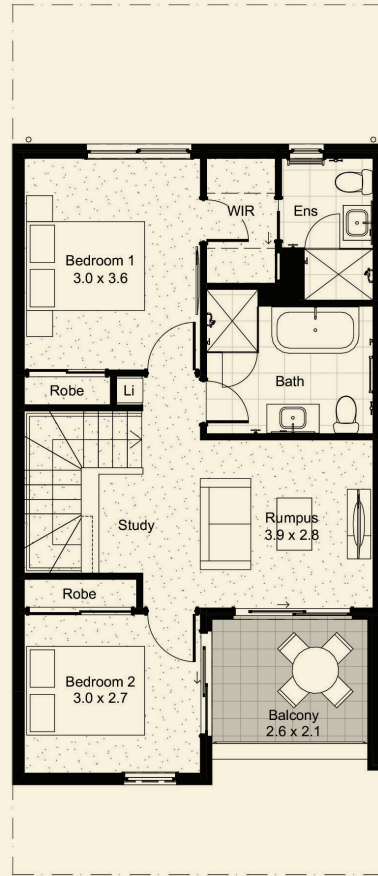


AREA MEASUREMENT (M²)

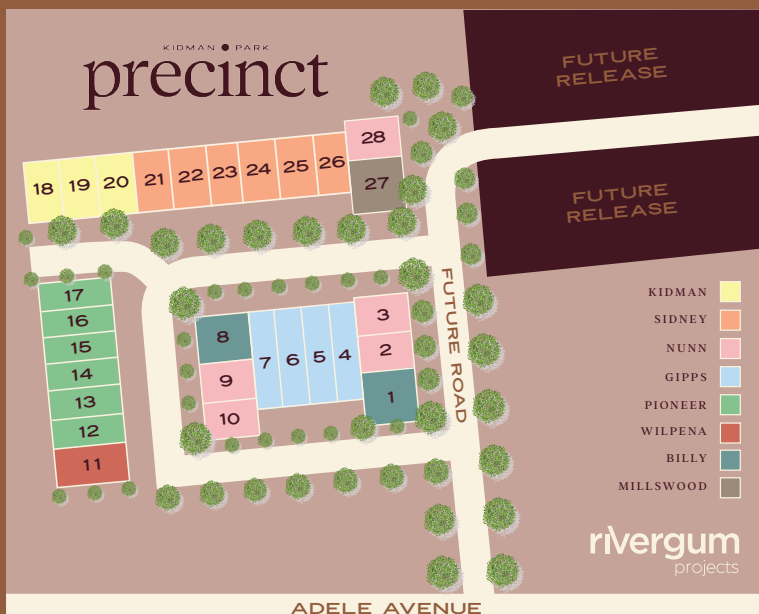
Living Ground	44.87
Living First Floor	62.08
Porch	4.01
Balcony	7.05
Garage	20.46
Total Area	138.47



GROUND FLOOR



FIRST FLOOR



SURROUND YOURSELF

With distinct positioning between the city and the beach, Precinct, Kidman Park offers a selection of Torrens Title terrace homes for a range of budgets and lifestyles.

Located amongst an already established community and with a focus on creating green leafy surrounds, these homes are within walking distance to life's amenities.

ON YOUR DOORSTEP...

- F45 Gym
- Findon Shopping Centre
- Coffee @ Cocolat

NEARBY...

- Indoor Sports Centre
- Horsley Reserve
- Findon Swimming Centre
- 3kms – Grange Beach
- 6kms – Adelaide City