

RESIDENCES
21-26

KIDMAN ● PARK

precinct

TORRENS TITLE TERRACES



SIDNEY

ADELE AVENUE, KIDMAN PARK

Sidney is your perfect executive home. This impressively designed terrace home has been thoughtfully considered for families and young professionals. The north-facing kitchen and living areas are on the ground floor with access to low maintenance courtyard, making the home feel spacious and open, ideal for entertaining.

Sidney provides a single garage with an additional car space provision on the property, three bedrooms on the upper floor, including study nook, full size bath in the main bathroom and dual balcony access to service two of the bedrooms.

rivergum
projects

KIDMAN • PARK

precinct

SIDNEY



3



2.5



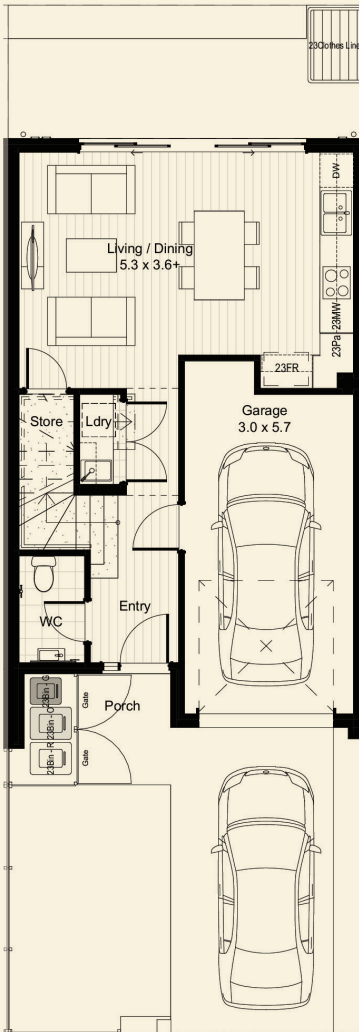
2



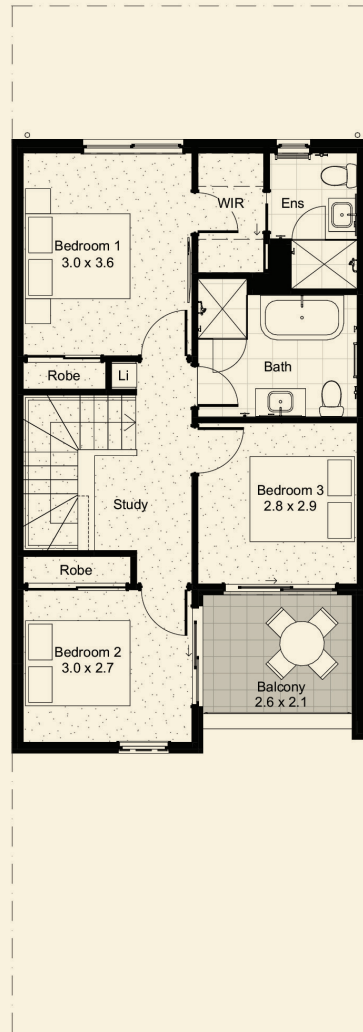
1

AREA MEASUREMENT (M²)

Living Ground	44.87
Living First Floor	62.08
Porch	4.01
Balcony	7.05
Garage	20.46
Total Area	138.47



GROUND FLOOR



FIRST FLOOR

SURROUND YOURSELF

With distinct positioning between the city and the beach, Precinct, Kidman Park offers a selection of Torrens Title terrace homes for a range of budgets and lifestyles.

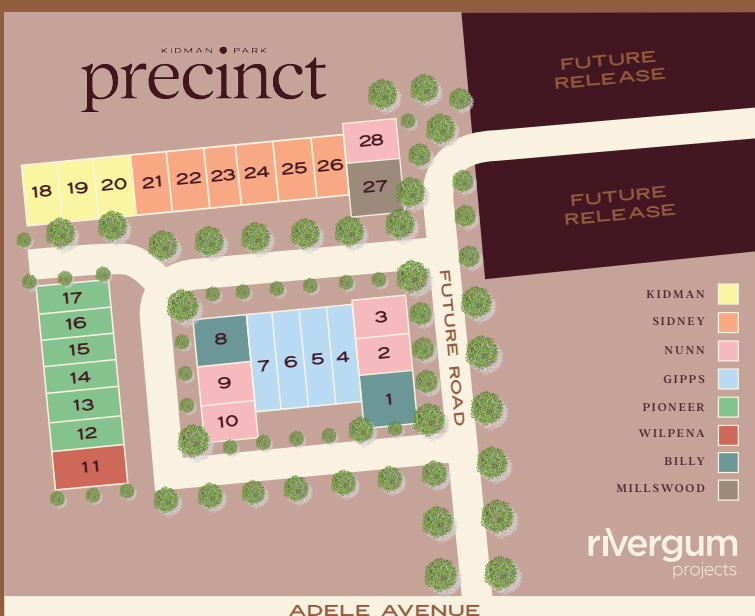
Located amongst an already established community and with a focus on creating green leafy surrounds, these homes are within walking distance to life's amenities.

ON YOUR DOORSTEP...

F45 Gym
Findon Shopping Centre
Coffee @ Cocolat

NEARBY...

Indoor Sports Centre
Horsley Reserve
Findon Swimming Centre
3kms – Grange Beach
6kms – Adelaide City



DISCLAIMER Images are for illustrative purposes only and while every effort has been made to correctly represent colours for this scheme, actual colours may vary. Materials, colours and brands are subject to availability and may be substituted if not available. Schemes may be changed without notice and external schemes are subject to developer covenant approval. This colour scheme is exclusive to The Precinct and any approved customer variations may incur additional costs. Rivergum Homes Pty Ltd Builder's Licence Numbers SA - GL113681 Rivergum Property Sales Pty Ltd RLA 61792