

RESIDENCES

2, 3, 9,
10 & 28

KIDMAN ● PARK

precinct

TORRENS TITLE TERRACES



NUNN

ADELE AVENUE, KIDMAN PARK

For those looking for a low maintenance, lock and leave lifestyle, or are looking for a smart investment –Nunn is an ideal choice. Nunn offers a unique floorplan configuration and appealing entry level price point for Kidman Park. Perfectly suited to those looking for a Torrens title home, without ongoing strata fees that apartment and unit living requires. Architecturally designed, you'll love the self-contained upstairs living, dining and bedroom areas including balcony while downstairs the laundry, second bedroom and service courtyard provide additional room to enjoy.

rivergum
projects

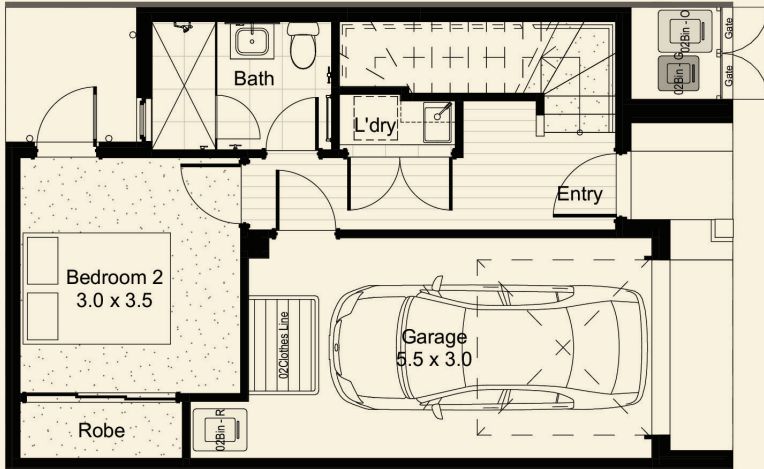
precinct

NUNN

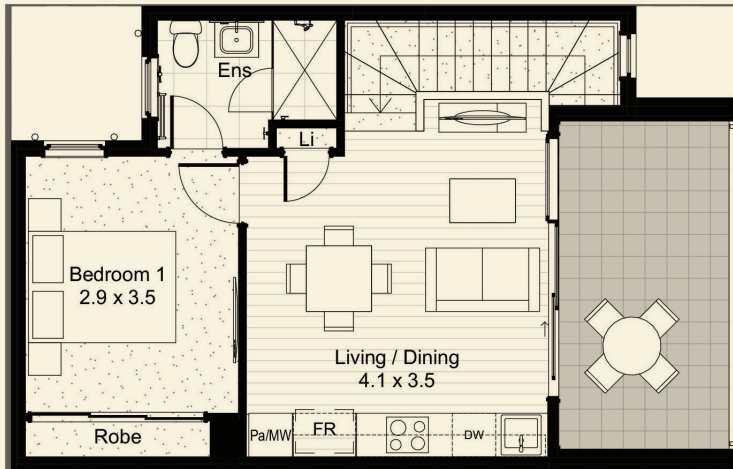


AREA MEASUREMENT (M²)

Living Ground	35
Living First Floor	47.72
Porch	2.89
Balcony 1	10.82
Garage	18.99
Total Area	115.42



GROUND FLOOR



FIRST FLOOR

SURROUND YOURSELF

With distinct positioning between the city and the beach, Precinct, Kidman Park offers a selection of Torrens Title terrace homes for a range of budgets and lifestyles.

Located amongst an already established community and with a focus on creating green leafy surrounds, these homes are within walking distance to life's amenities.

ON YOUR DOORSTEP...

- F45 Gym
- Findon Shopping Centre
- Coffee @ Cocolat

NEARBY...

- Indoor Sports Centre
- Horsley Reserve
- Findon Swimming Centre
- 3kms – Grange Beach
- 6kms – Adelaide City

