

RESIDENCE
27

KIDMAN ● PARK

precinct

TORRENS TITLE TERRACES



MILLSWOOD

ADELE AVENUE, KIDMAN PARK

Striking in appearance and impressive floorspace, Millswood is your perfect family home. Delivering an abundance of space and light, this impressive architecturally designed 3-level terrace home has been thoughtfully considered for families and young professionals. Millswood provides a secure double car garage, three bathrooms, including one full size bath, open kitchen and living areas with double balcony access, the configuration perfect for entertaining family and friends and an additional balcony on the top floor to service the master bedroom. This three-bedroom home offers grandeur and style over 3-levels and is limited in availability.

rivergum
projects

KIDMAN • PARK

precinct

MILLSWOOD



3



3

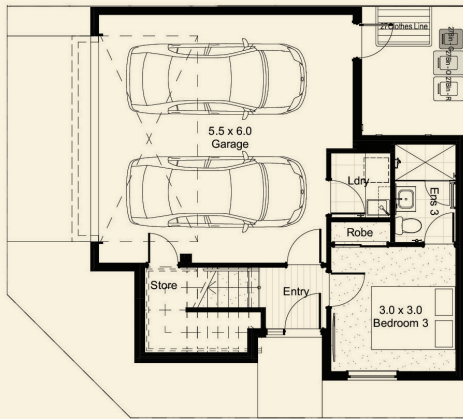


1



2

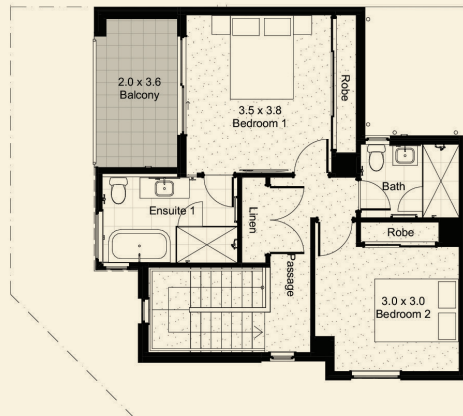
GROUND FLOOR



FIRST FLOOR

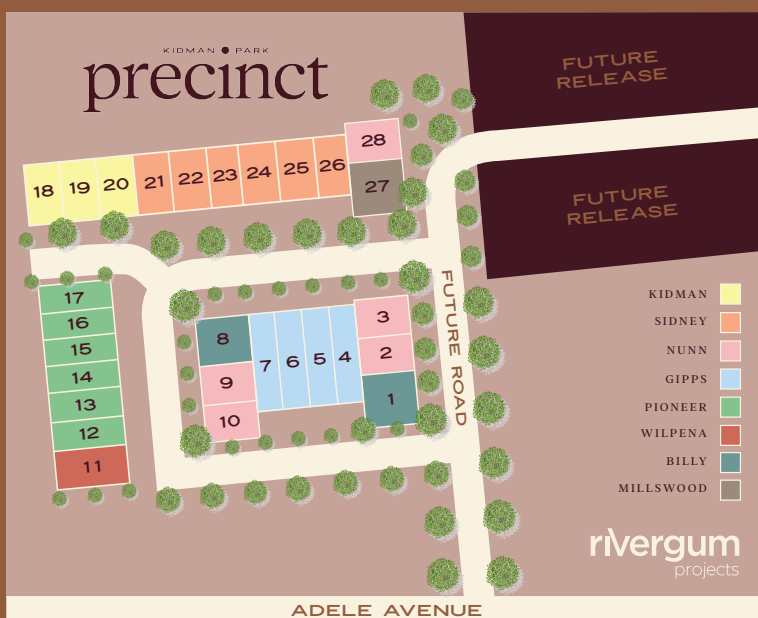


SECOND FLOOR



AREA MEASUREMENT (M²)

Living Ground	29.98
Living First Floor	56.93
Living Second Floor	61.89
Porch	0.97
Balcony 1	15.09
Balcony 2	7.92
Garage	38.88
Total Area	211.66



SURROUND YOURSELF

With distinct positioning between the city and the beach, Precinct, Kidman Park offers a selection of Torrens Title terrace homes for a range of budgets and lifestyles.

Located amongst an already established community and with a focus on creating green leafy surrounds, these homes are within walking distance to life's amenities.

ON YOUR DOORSTEP...

F45 Gym
Findon Shopping Centre
Coffee @ Cocolat

NEARBY...

Indoor Sports Centre
Horsley Reserve
Findon Swimming Centre
3kms – Grange Beach
6kms – Adelaide City